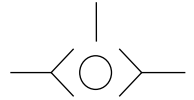


Mobile Valves - Flow Diverters

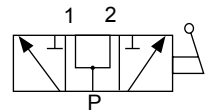
VUSF Series - Shuttle Valves



Part Number	Port Size	Rated Flow	Pressure Setting Range
VUSF140	1/4" BSP	20 l/min	210 Bar
VUSF380	3/8" BSP	40 l/min	210 Bar
VUSF120	1/2" BSP	60 l/min	210 Bar

When two pressure lines converge, the higher of the two pressures is selected

DDF3 Series - 3-Way Flow Diverters



Part Number	Port Size	Rated Flow	Pressure Setting Range
DDF3380A	3/8" BSP	60 l/min	350 Bar
DDF3120A	1/2" BSP	90 l/min	350 Bar
DDF3340A	3/4" BSP	120 l/min	350 Bar
DDF3100A	1" BSP	200 l/min	300 Bar

Flow diverters are used to divert oil flow from port 1 to port 2 and vice versa