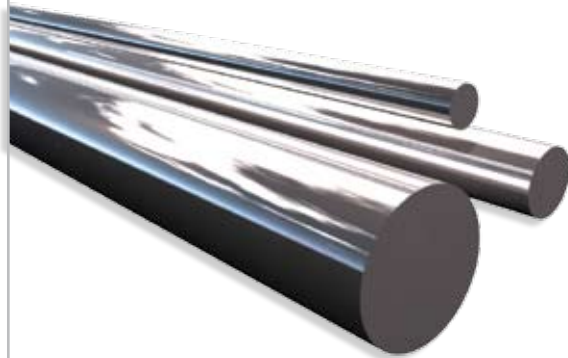


Chromed Bars

Goldquest Chromed Bars - 2C45



Chromed Bars : Technical Specification

Goldquest chromed shafting is available off-the-shelf in metric diameters from 20mm to 125mm and in imperial diameters from 1,25" to 2,25". Our range is ever expanding, if we do not list the size you require, please call our sales department. All Goldquest bars are ground and plated with micro cracked chromium. Unlike locally produced bars manufactured from peeled bar, Goldquest chrome bars offer consistent straightness and roundness throughout the entire bar length. The micro cracked chromium plating ensures a corrosion resistance that is superior to almost any bar produced locally. Please contact our technical staff should you wish to conduct an obligation free comparison.

- Technical Characteristics:
 - Tolerance: ISO f7
 - Chromium thickness: 20 µm minimum
 - Roughness Ra: 0,2 µm maximum
 - Chromium type: Microcracked
 - Chromium Hardness: HV 900 > 1150
- Note: the chromium hardness is only applicable for the thickness of the plating, it does not imply that the bars will be resistant to dents and scores caused by foreign matter. In arduous applications we are able to offer induction hardened bars.
- Please contact our technical department should you require additional information.

• **IMPORTANT:** These characteristics are indicative and not binding. Goldquest reserve the right to revise technical characteristics without notice.

2C45 Chrome Bar Stock

Metric bars available Ex-Stock (mm)

20	25	30	32	35
40	50	56	60	65
70	75	80	90	100
110	125			

Imperial Bars available Ex-Stock (Inches)

1,25"	1,50"	1,75"	2,00"	2,25"
-------	-------	-------	-------	-------