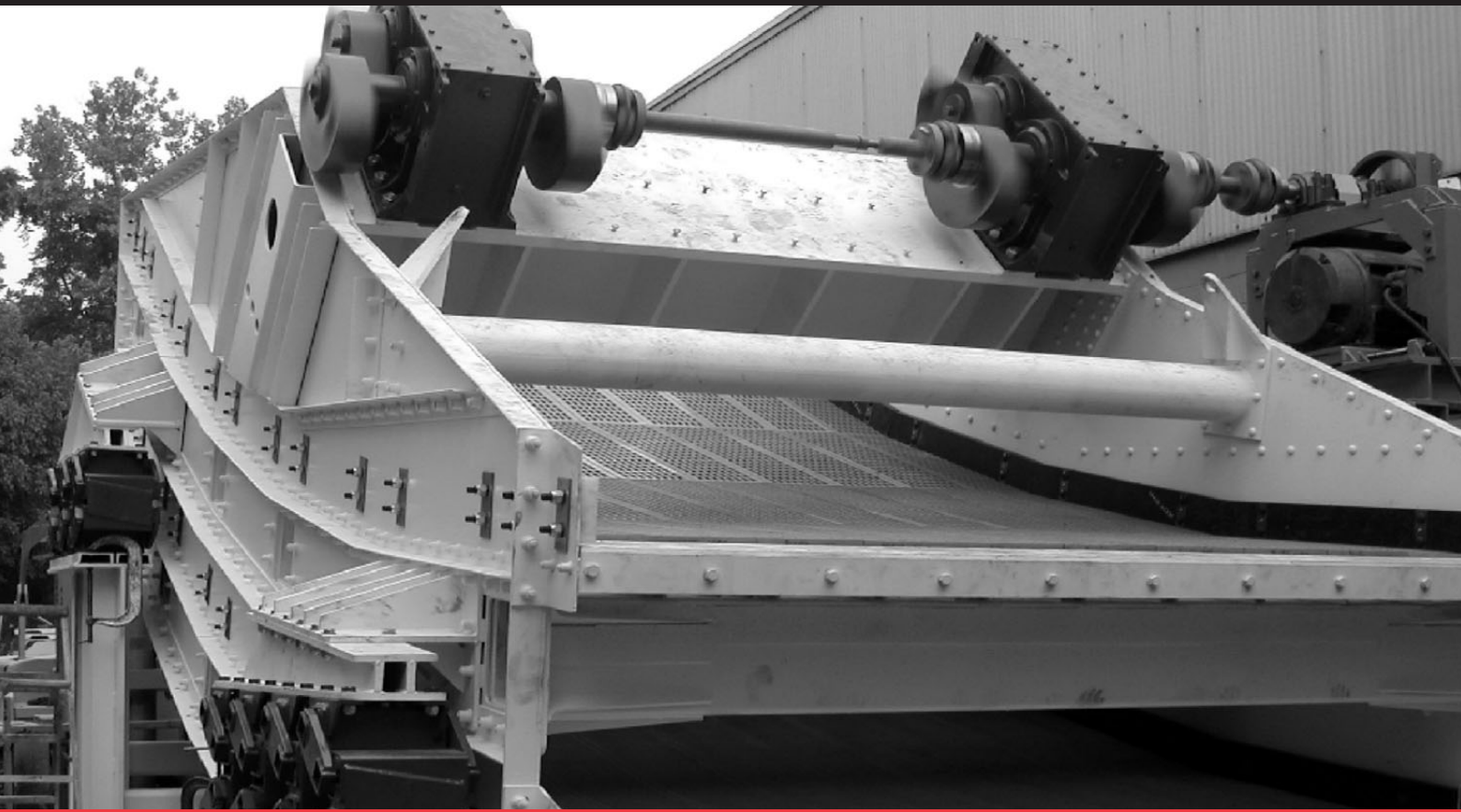




**BELTING**



## **SCREEN PANELS**

### **Technical Guide**

#### BRANCHES

East London Tel:+27 43 722 6616 Fax:+27 43 722 5626 • Port Elizabeth Tel:+27 41 406 0550 Fax:+27 41 406 0559

Johannesburg Tel:+27 11 620 1888 Fax:+27 11 620 1675 • Mpumalanga Tel:+27 13 752 7911 Fax:+27 13 752 7888

Cape Town Tel:+27 21 948 1750 / 1692 Fax:+27 21 948 1649 • Richards Bay Tel:+27 35 789 7123 Fax:+27 35 789 8491

Durban Tel:+27 31 714 1000 Fax:+27 31 700 5087

A DIVISION OF THE BEARING MAN GROUP

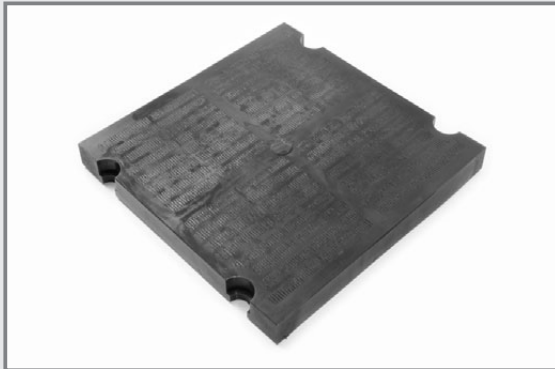
ISO 9001 Certified



## RUBBER

### Advantages:

- Excellent impact absorption properties
- Superior non-blinding properties
- Superior dry-screen wear properties
- Excellent non-blinding properties with fine aperture panels
- Standard patented spring steel frame insert



## POLYURETHANE

### Advantages:

- Good abrasion wear properties
- Superior wet-screen wear properties
- Cost efficient
- Various surface features available
- Standard patented spring steel frame insert



## PATENTED SPRING STEEL FRAME

### Advantages:

- Cost efficient
- Reduced weight per panel

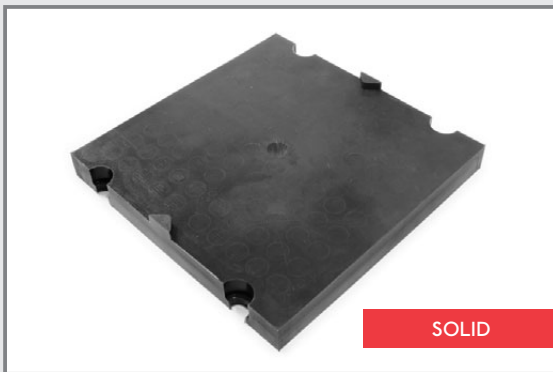
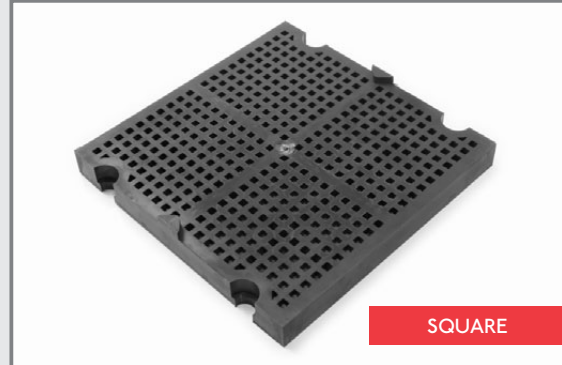


## FASTENING

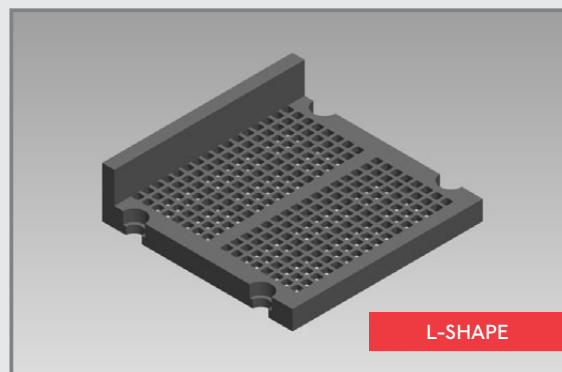
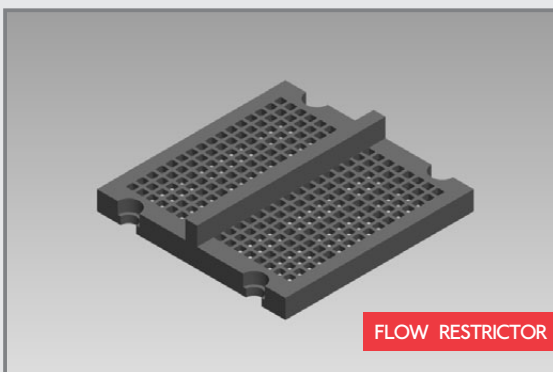
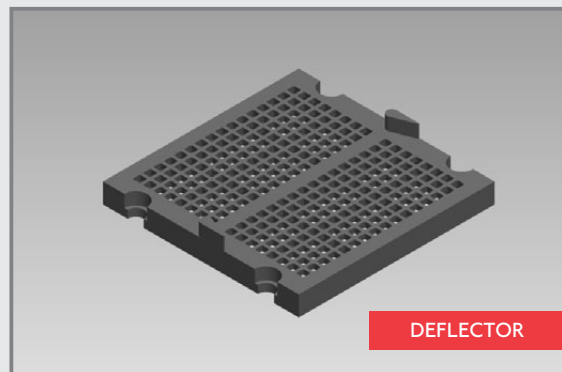
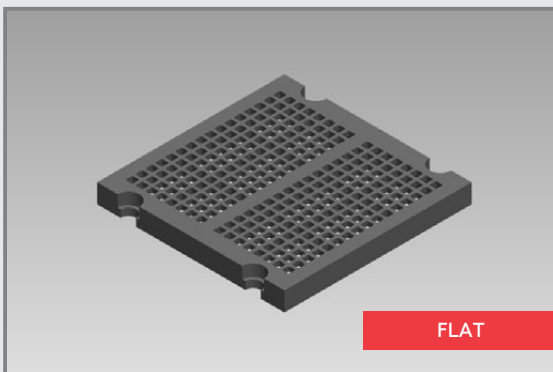
The trusted pin and sleeve system secures the panels to all standard stringer configurations

## APERTURE DESIGNS

- All apertures available in both rubber and polyurethane.
- New designs are continuously being developed in line with industry demand



## SURFACE FEATURES



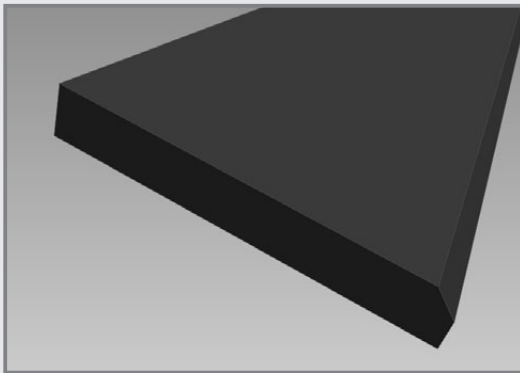
## APERTURE SIZES

New apertures are constantly being added to our comprehensive stockholding. Please contact your nearest Hub if your required size is not shown here. New dies are cut in response to market demand.

All sizes are available in rubber and polyurethane.

Aperture Sizes		
0.63 x 12	12 KVR	45 x 45
1.00 x 12	25 KVR	75 x 75
1.47 x 12	38 KVR	6 SQ
2.00 x 12	3 x 3	8 SQ
2.5 x 12	7 x 7	11 SQ
0.80 x 8	15 x 15	18 SQ
8 x 8	20 x 20	22 SQ
6 KVR	24 x 24	32 SQ
8 KVR	40 x 40	Solid

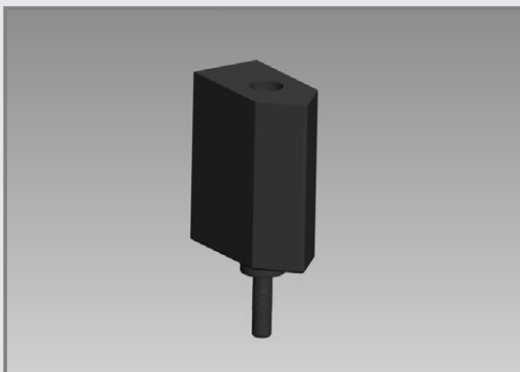
## SIDELINERS



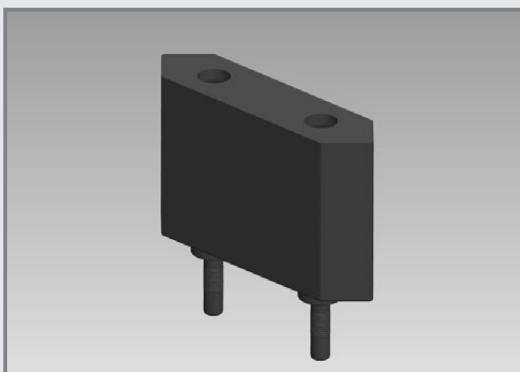
Length (mm)	Thickness (mm)	Height (mm)	Features
1525	30	200	Chamfer
1220	30	150	Flat
1220	30	150	Chamfer

## DOUBLE DECK CONVERSIONS

A cost efficient alternative when a single version needs to be converted into a double deck version.



Height (mm)
100
150
200



# GUIDELINES & STANDARD FEATURES

## STANDARD FEATURES

- Spring steel frame insert
- Maximum open area
- 4 Pin and sleeve fixing
- 305MM Square panels

Material
Rubber
Polyurethane

Thickness (mm)
30
40
50
60

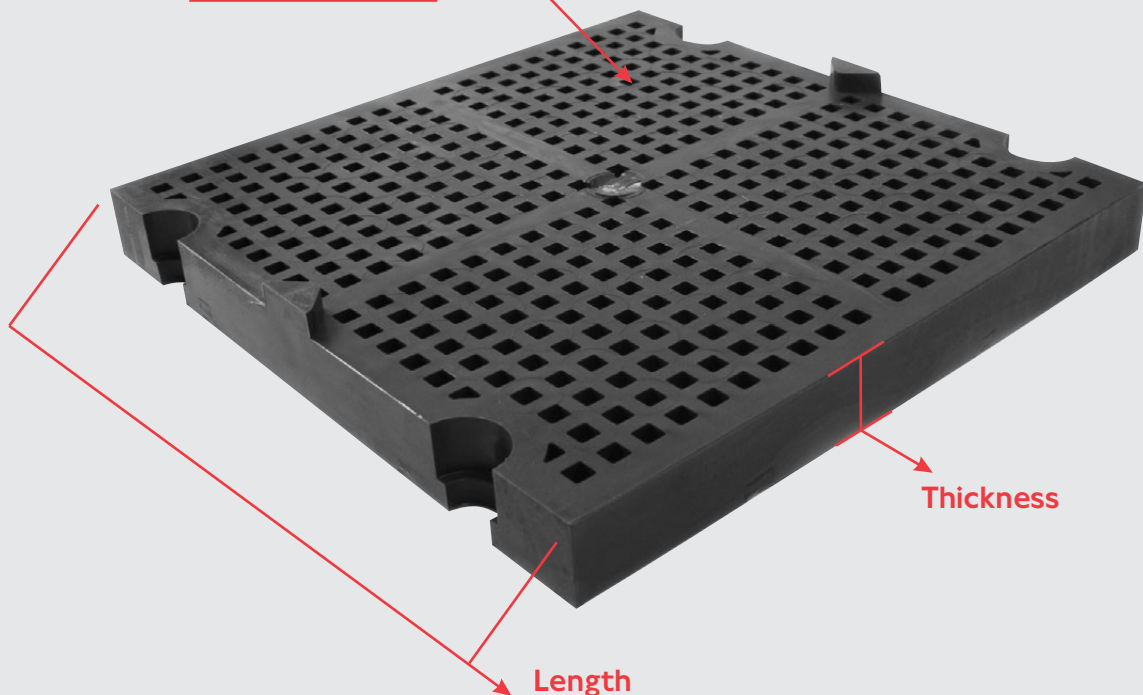
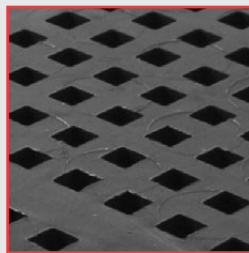
Aperture Size
0.63 x 12
1.00 x 12
1.47 x 12
2.00 x 12
2.5 x 12
0.80 x 8
8 x 8
6 KVR
8 KVR
12 KVR
25 KVR
38 KVR
3 x 3
7 x 7

Aperture Size
15 x 15
20 x 20
24 x 24
40 x 40
45 x 45
75 x 75
6 SQ
8 SQ
11 SQ
18 SQ
22 SQ
32 SQ
Solid

Aperture Design
Square
Slotted
KVR
Solid

Surface Features
Flat
Deflector
Flow Restrictor
L-Shape

Aperture



## NEW DIES TO BE MANUFACTURED

- 50 Square 40mm thick
- 50 KVR 40mm thick
- 20KVR 31mm thick
- 70KVR 40mm thick
- 30KVR 31mm thick
- 85KVR 40mm thick

24 HR TOLL-FREE EMERGENCY  
BRANCH HELPLINE:

**0800 022 224**

WEBSITE:

**[www.bmgworld.net](http://www.bmgworld.net)**



BEARING MAN GROUP

BEARINGS • SEALS • POWER TRANSMISSION • BELTING  
DRIVES & MOTORS • FASTENERS • FILTRATION • HYDRAULICS

ISO 9001 Certified